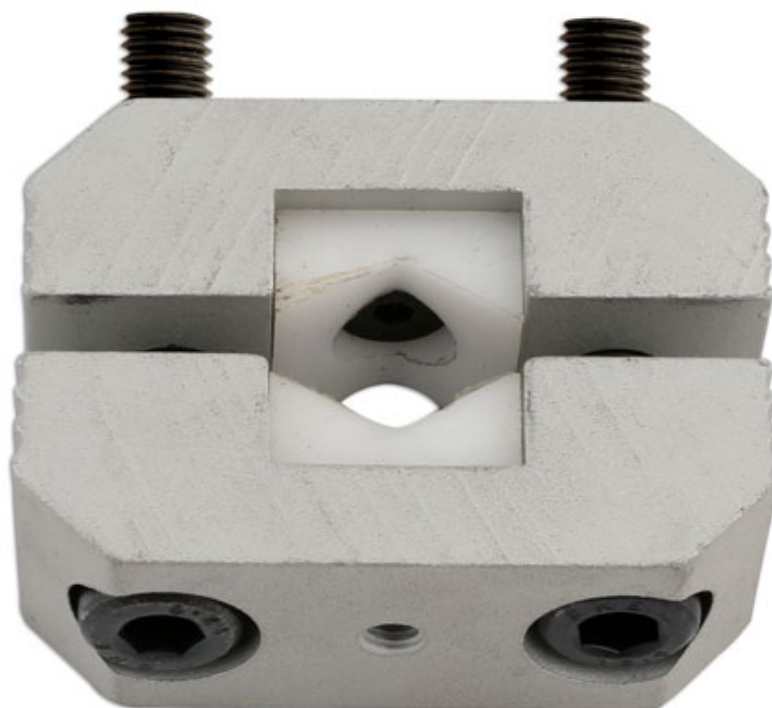


Clamp for Strut Insert Pistons - 60mm Bolts

Designed to lock a MacPherson Strut in its fully extended position when changing the springs.



Additional Information

- Particularly useful when working with struts that are equipped with strong internal springs (tension stop springs) that pull the strut shaft partly into the strut.
- For strut pistons with max. diameter of 36mm.
- Kit includes 60mm long bolts (68mm including head).
- Manufactured from Aluminium with Nylon jaws & Chrome Molybdenum hardwear.
- Included in Laser MacPherson Strut Expander Tool Set, Part No. 5790.

<http://lasertools.co.uk/product/6270>

